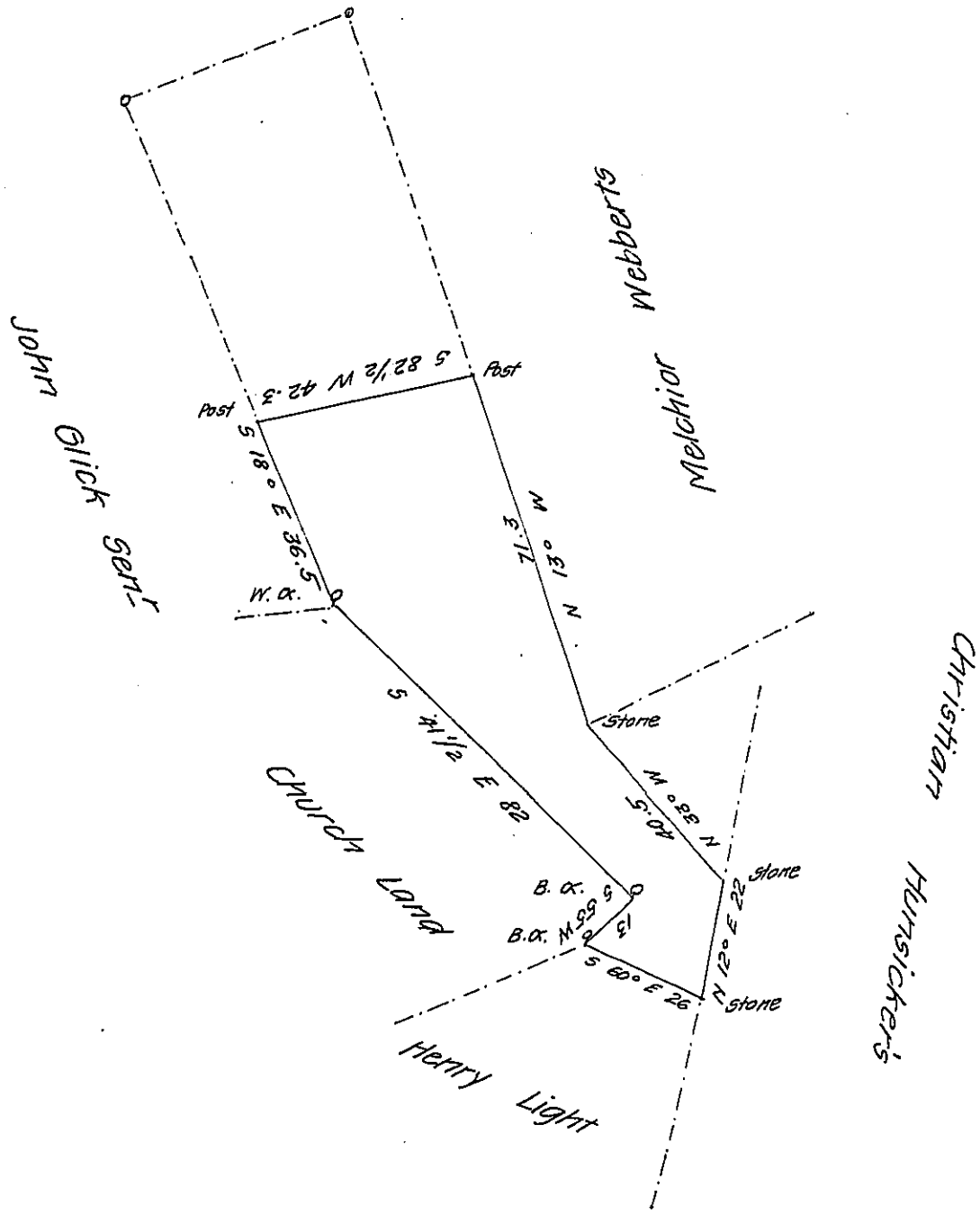


FORM NO 1.



A draft of a tract of land situate in Bethel Township Lebanon-
 containing Nineteen Acres & and One hundred & fifty nine Perches & the
 Usual allowance for Roads &c. It being part of a tract of $42\frac{1}{2}$ ^{ac} & the
 Usual allowance of six P. Ct. By Warrant granted to Philip Glick dated the
 27th of July 1772 ^{Survey} By the Instance of Henry Glick & Henry ^{Light} Executors of John
 Glick jr. Dec^d Jan^y 25. 1826

Tobias Kreider Jr. —

To Gabriel Hiester Esq.

S. G.

IN TESTIMONY that the above is a copy of the original remaining on file in
 the Department of Internal Affairs of Pennsylvania, made
 conformably to an Act of Assembly approved the 16th day of
 February, 1833, I have hereunto set my Hand and caused
 the Seal of said Department to be affixed at Harrisburg,
 this ninth day of September 1907

Henry Houck
 Secretary of Internal Affairs.